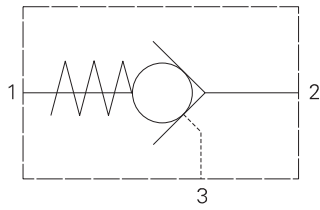


4KD25 - Check valve

Pilot-to-open with decompression stage
 25 L/min (6 USgpm) • 700 bar (10000 psi)



Operation

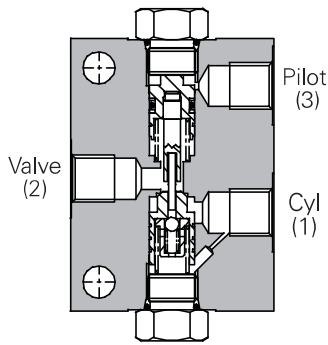
In free flow direction, flow through inlet unseats the poppet and flows out of the cylinder port. When the control valve is centered the load is locked. When pilot pressure is applied the piston unseats the small poppet in the center of

the main poppet. Flow through this small seat area lowers the load or locked pressure (decompression stage). With load pressure reduced the main poppet is then piloted fully open allowing reverse flow.

Features

Decompression feature for low pilot pressure requirements and to reduce hydraulic noise on rapid loss of pressure.

Sectional view



Performance data

Ratings and specifications

Figures based on oil temperature of 40° C and viscosity of 32 cSt (150 SUS)

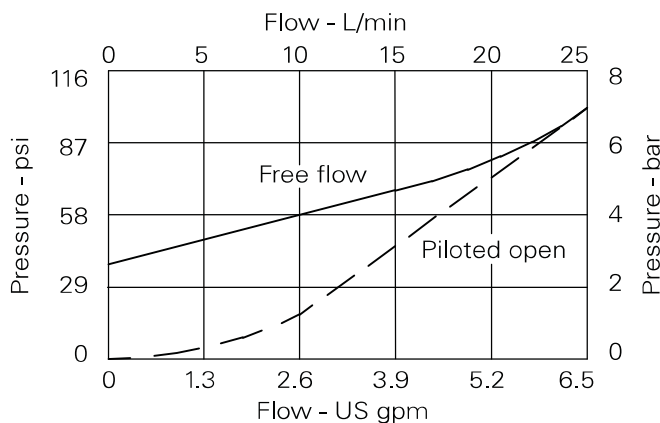
Rated flow	25 L/min (6 USgpm)
Maximum pressure	700 bar (10000 psi) Cylinder Port 140 bar (2000 psi) Pilot Port
Pilot ratio	25:1 Decompression 4:1 Full Flow
Body material	Steel
Mounting position	Line mounted
Weight	0.8 kg (1.8 lbs.)
Seal kit number	SK1060 (Nitrile) SK1060V (Viton®)
Recommended filtration level	BS5540/4 Class 18/13 (25 micron nominal)
Operating temperature	-30° to +90° C (-22° to +194°F)
Nominal viscosity range	5 to 500 cSt

Viton is a registered trademark of E. I. DuPont

Description

Used to lock a cylinder or part of a circuit and prevent reverse flow until pilot pressure is applied. For use in high pressure, low flow circuits and circuits requiring decompression. Can be used in conjunction with the 1T16 pressure intensifier. See page J-42.

Pressure drop

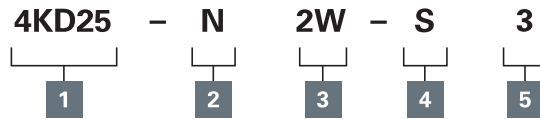


Where measurements are critical request certified drawings. We reserve the right to change specifications without notice.

4KD25 - Check valve

Pilot-to-open with decompression stage
25 L/min (6 USgpm) • 700 bar (10000 psi)

Model code



1 Basic code

4KD25 - Complete valve

2 Adjustment means

N - Fixed

3 Port sizes - bodied valves only

2W - 1/4" BSP

4 Seals

S - Nitrile (for use with most industrial hydraulic oils)
SV - Viton (for high temperature and most special fluid applications)

5 'O' Ring on pilot piston

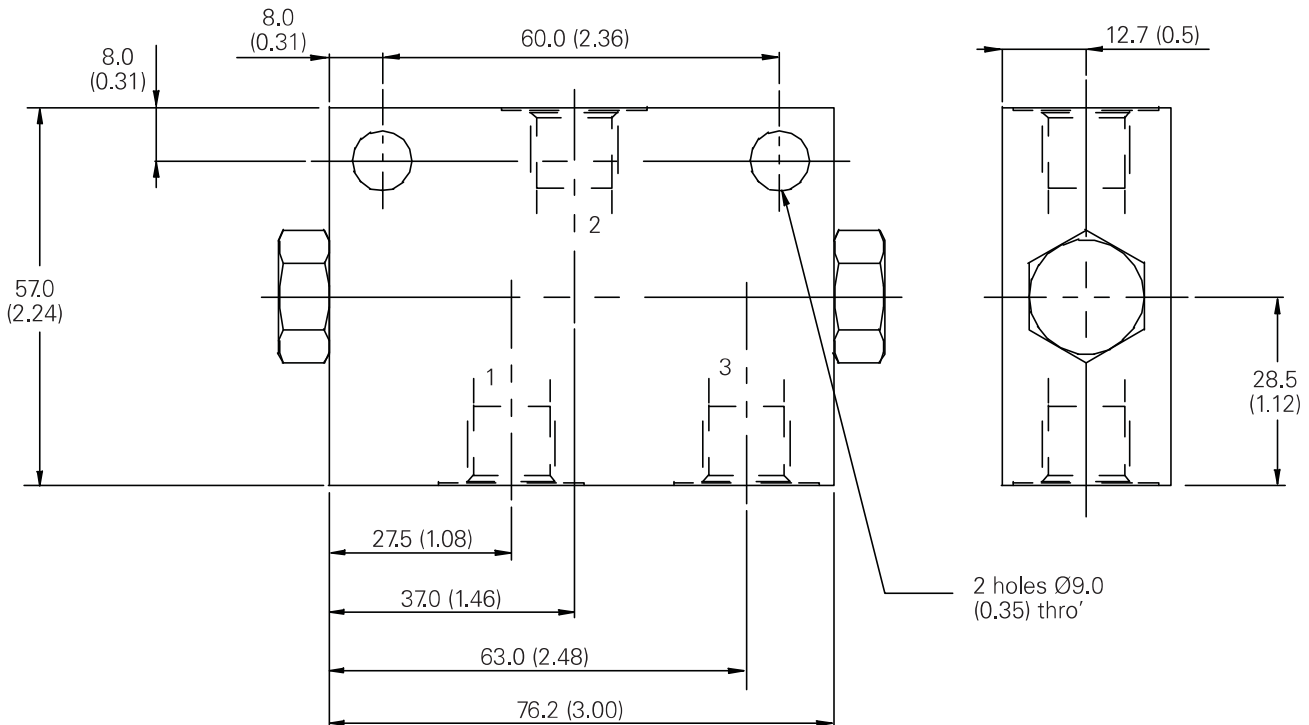
3 - Standard
Omit if not required

Dimensions

mm (inch)

Complete valve

1/4" Ports
Basic code
4KD25



Where measurements are critical request certified drawings. We reserve the right to change specifications without notice.