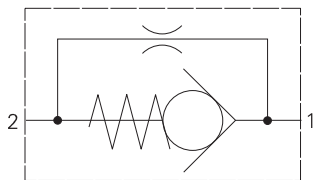


CV6-16 - Check valve

Direct acting, poppet type with orifice
151 L/min (40 USgpm) • 210 bar (3000) psi



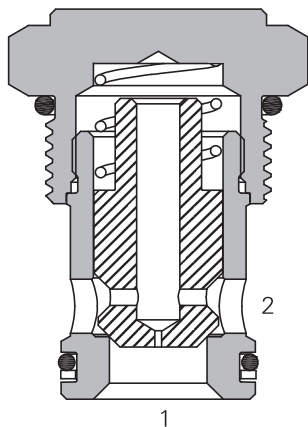
Operation

The poppet remains on its seat until the pressure drop across the orifice overcomes the spring force over the seat area. Full flow will then take place from port 1 to 2. Flow from port 2 to 1 will be restricted by the orifice.

Features

Hardened and ground working parts extend service life. Robust design with a 210 bar (3000 psi) max pressure rating. Compact simple solution in a single cartridge.

Sectional view



Performance data

Ratings and specifications

Performance data is typical with fluid at 21,8 cST (105 SUS) and 49°C (120°F)

Typical application pressure (all ports)	210 bar (3000 psi)
Cartridge fatigue pressure (infinite life)	210 bar (3000 psi)
Rated flow	151 L/min (40 USgpm)
Free flow cracking pressure @ 1 L/min (0.25 USgpm)	005 - 0,21 bar (3 psi) 020 - 1,34 bar (20 psi) 030 - 2,07 bar (30 psi) 040 - 2,76 bar (40 psi) 050 - 3,45 bar (50 psi) 100 - 6,9 bar (100 psi)

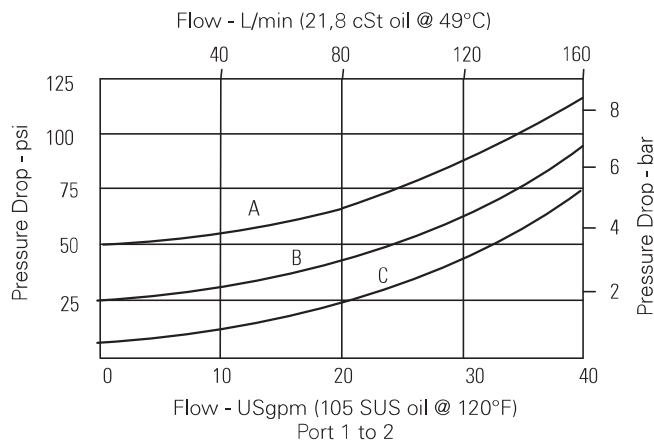
Orifice size range	0.015 to 0.125" (0.381 - 3.175 mm)
Temperature range	-40° to 120°C (-40° to 248°F)
Cavity	C-16-2
Fluids	All general purpose hydraulic fluids such as MIL - H-5606, SAE 10, SAE 20, etc.
Filtration	Cleanliness code 18/16/13
Standard housing material	Aluminum
Weight, cartridge only	0,26 kg (0.58 lbs.)
Seal kit	565810 (Buna-N) 889609 (Viton®)

Viton is a registered trademark of E.I. DuPont

Description

This is a poppet type screw-in cartridge check valve with a by-pass orifice. This will allow free flow into an actuator while restricting the flow out of it.

Pressure drop



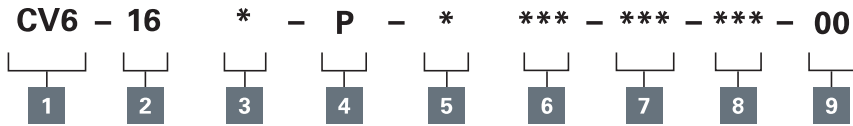
A - CV6 16*P 0000 050 00 **C** - CV6 16*P 0000 005 00
B - CV6 16*P 0000 020 00

Where measurements are critical request certified drawings. We reserve the right to change specifications without notice.

CV6-16 - Check valve

Direct acting, poppet type with orifice
151 L/min (40 USgpm) • 210 bar (3000) psi

Model code



1 Function CV6 - Check valve with bypass orifice
2 Size 16 - 16 size
3 Seal material N - Buna-N V - Viton
4 Style P - Poppet

5 Valve housing material 0 - No housing A - Aluminum
6 Port size 000 - Cartridge only
7 Free flow cracking pressure 005 - 0,21 bar (5 psi) (Anti-cavitation) 020 - 1,34 bar (20 psi) (Anti-cavitation) 030 - 2,07 bar (30 psi) 040 - 2,76 bar (40 psi) 050 - 3,45 bar (50 psi) 100 - 6,90 bar (100 psi)

Code	Port size	Housing number	
		Aluminum light duty	Aluminum fatigue rated
6B	3/4" BSPP	02-175463	-
12T	SAE 12	566149	-
4G	1/2" BSPP	-	876716
6G	3/4" BSPP	-	876718
10H	SAE 10	-	876717
12H	SAE 12	-	566113

8 Orifice size Specify in thousandths of an inch Ø - 0.125 max Ø - 0.015 min	9 Special features 00 - None (Only required if valve has special features, omitted if "00")
--	--

Dimensions

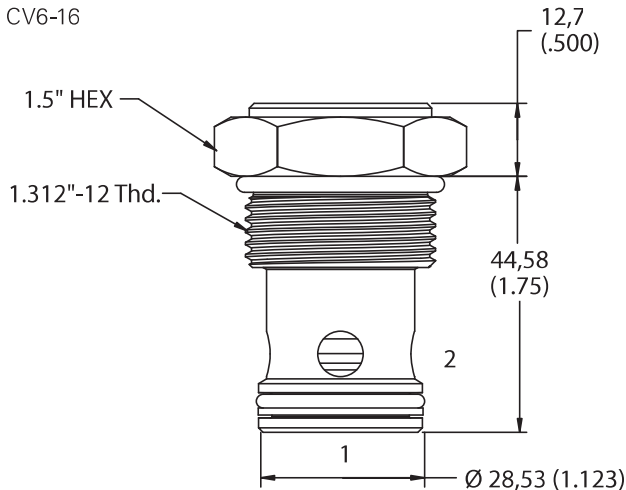
mm (inch)

Note: Torque cartridge in aluminum housing
108-122 Nm (80-90 ft. lbs).

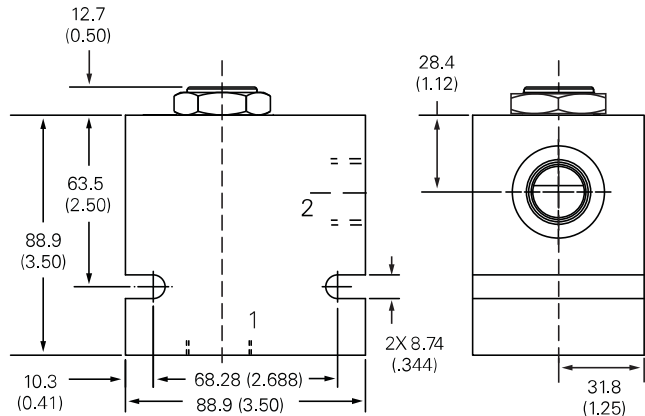
Cartridge drawing

Basic code

CV6-16



Installation drawing



Where measurements are critical request certified drawings. We reserve the right to change specifications without notice.