

FLOW REGULATING VALVE TYPE EQFM113...
DROSSELRUECKSCHLAGVENTIL TYP EQFM113...



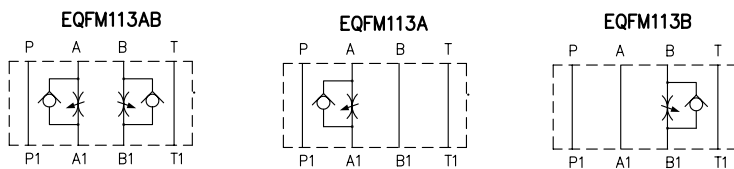
CETOP 3 modular single-way flow regulating valve, not compensated.
 Fitted with O-Ring holding plate, by turning the valve body it's possible to adjust inlet or outlet flow.

Zwischenplatten-Drosselrueckschlagventile NG06 zur Drosselung der Volumenstroeme.
 Durch Verwendung einer Dichtplatte (Seite 73.1) ist eine Zulauf- oder Ablaufregelung moeglich.

TECHNICAL SPECIFICATIONS	TECHNISCHE DATEN
Nominal flow / max Durchfluss:	— 50 l/min.
Max pressure / max Betriebsdruck:	— 300 bar
Oil viscosity / Ölviskosität:	— 2,8–380 cSt
Oil temperature / Öltemperatur:	— -10° +80°
Oil type / Öl Typ:	— mineral HL-HLP DIN 51524
Filtering / Ölfilterung:	— 19/15 ISO 4466 (25micron)
Gaskets / Dichtung:	— NBR + PTFE
Body material / Werkstoff:	— GGG40
Weight / Gewicht:	— 1.5 Kg

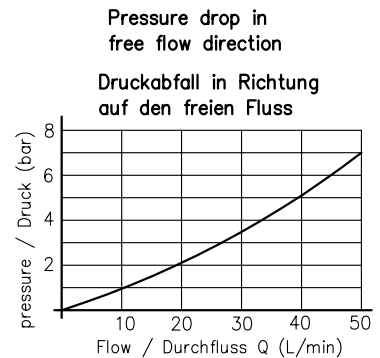
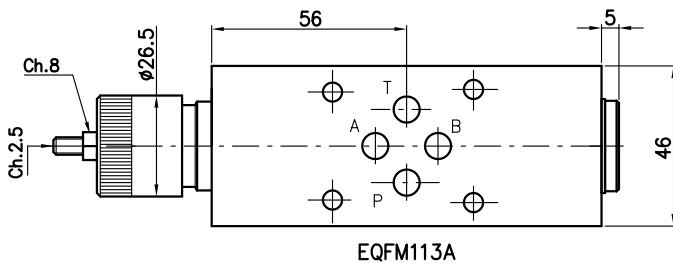
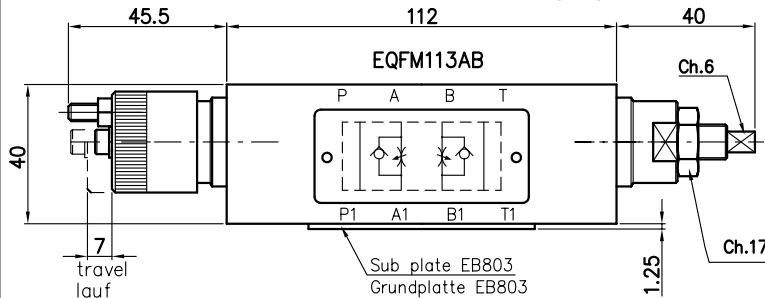
hydraulic scheme

hydraulikschemata



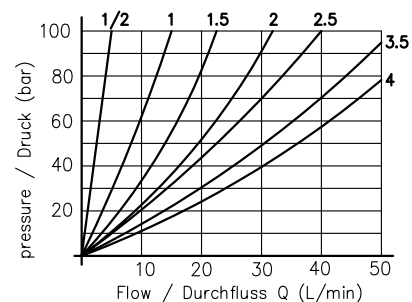
Handwheel / Handrad

by key / Schlussverstellung

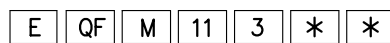


Pressure drop depending on handwheel turn number from opening start

Druckabfall in Abhängigkeit von den Drehungen des Handrads vom Beginn der Öffnung



Ordering code:
 Bestell-Code:



EUROFLUID = E

Flow regulating valve = QF
 Drosselrueckschlagventil

type of modular mounting = M
 Typ fuer Modularmontage

type / Typ = 11

CETOP 3 = 3

Regolazione / Reglage

F = by key / Schlussverstellung

V = Handwheel / Aluhandrad

AB - A - B = adjusting on / Einstellung auf

**VALVES
 VENTILE**