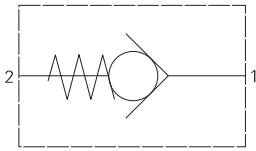


FPR - Check valve

Guided poppet line mounted
Up to 310 L/min (82 USgpm) • 350 bar (5000 psi)



Operation

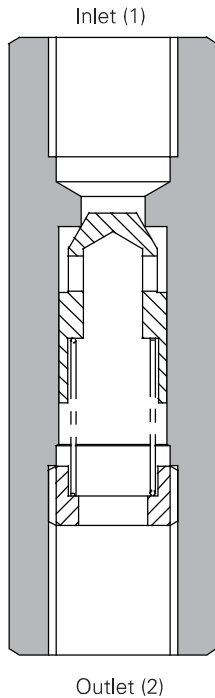
These are in line check valves. Free flow is allowed from port 1 to port 2 when the inlet pressure rises higher than the crack pressure.

Flow is prevented between port 2 and port 1 by the poppet resting on the seat within the body.

Features

All steel construction with hardened and precision ground poppet gives excellent flow capability and shut-off characteristics with good tolerance to particle (dirt) contaminated fluid.

Sectional view



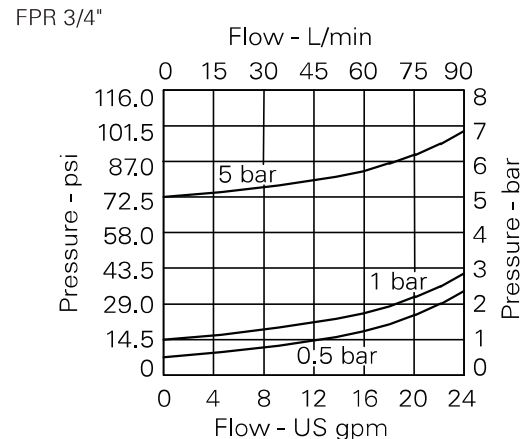
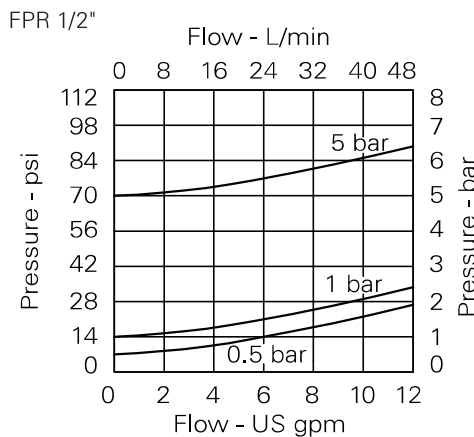
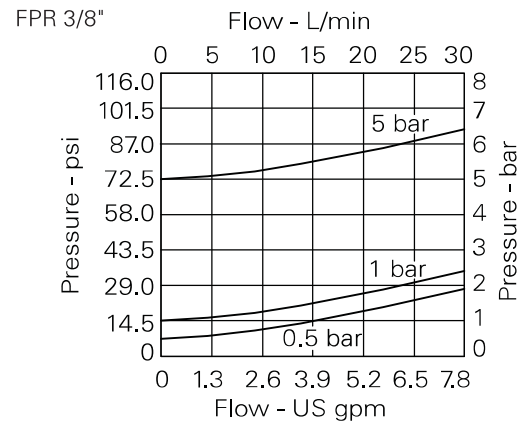
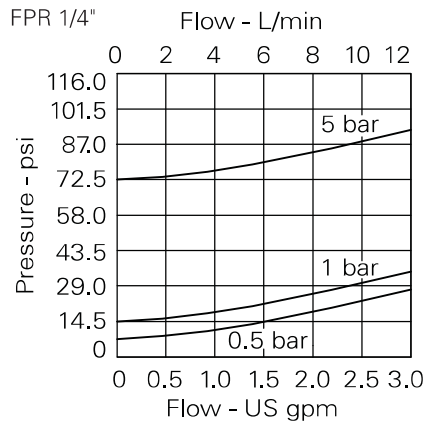
Performance data

Ratings and specifications

Figures based on: Oil Temp = 40°C Viscosity = 32 cSt (150 SUS)

Rated flow	310 L/min (82 USgpm)			
Valve material	Working parts hardened and ground steel. External surfaces zinc plated.			
Mounting position	Line mounted			
Weight	FPR 1/4"	0.11 kg (0.24 lbs)	FPR 1"	0.89 kg (1.95 lbs)
	FPR 3/8"	0.19 kg (0.42 lbs)	FPR 1 1/4"	1.75 kg (3.85 lbs)
	FPR 1/2"	0.25 kg (0.55 lbs)	FPR 1 1/2"	2.10 kg (4.63 lbs)
	FPR 3/4"	0.50 kg (1.10 lbs)		
Recommended filtration level	BS5540/4 Class 18/13 (25 micron nominal)			
Operating temp	-30°C to +90°C (-22°F to +194°F)			
Nominal viscosity range	5 to 500 cSt			

Pressure drop



Description

A range of line mounted valves for convenient installation into hydraulic circuits. Valves allow flow at a low pressure drop (from 0.5 bar, 7 psi) in the free flow direction and prevent flow in the reverse direction. The range extends from 1/4" BSP to 1 1/2" BSP (12 liters/min 3 US GPM to 310 min/min, 82 US GPM) nominal flow with cracking pressures from 0.5 to 5 bar (7 to 72.5 psi).

Where measurements are critical request certified drawings. We reserve the right to change specifications without notice.

FPR - Check valve

Guided poppet line mounted
Up to 310 L/min (82 USgpm) • 350 bar (5000 psi)

Model code

FPR ** - 0.5



1 Basic code

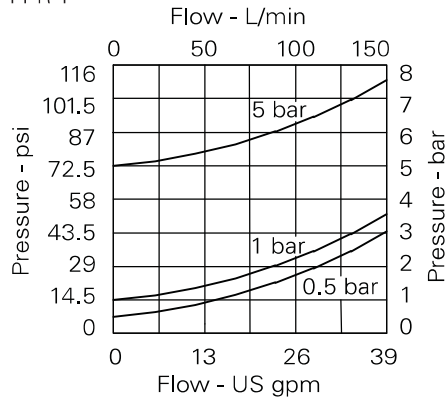
- FPR1/4 - Inline valve
- FPR3/8 - Inline valve
- FPR1/2 - Inline valve
- FPR3/4 - Inline valve
- FPR1 - Inline valve
- FPR11/4 - Inline valve
- FPR11/2 - Inline valve

2 Cracking pressure

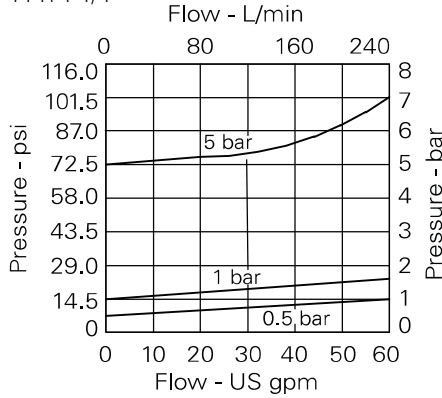
- 0.5** - 0.5 bar (standard)
- 1.0** - 1.0 bar (FPR1/4, 3/8, 1/2, 3/4 Only)
- 2.5** - 2.5 bar
- 5.0** - 5.0 bar
- 10.0** - 10.0 bar

Pressure drop

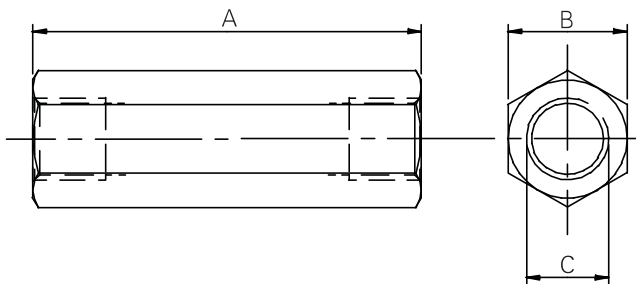
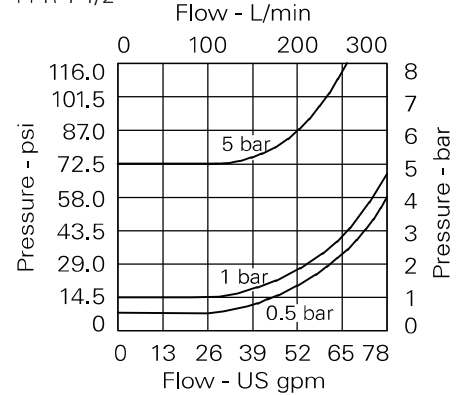
FPR 1"



FPR 1 1/4"



FPR 1 1/2"



Basic code	Flow rate	Pressure	A	B	C
FPR 1/4	12 L/min (3 USgpm)	350 bar (5000 psi)	62	19	1/4" BSP
FPR 3/8	30 L/min (8 USgpm)	350 bar (5000 psi)	68	24	3/8" BSP
FPR 1/2	45 L/min (12 USgpm)	350 bar (5000 psi)	78	27	1/2" BSP
FPR 3/4	85 L/min (22 USgpm)	300 bar (4300 psi)	88	36	3/4" BSP
FPR 1	140 L/min (37 USgpm)	250 bar (3600 psi)	112	46	1" BSP
FPR 1 1/4	220 L/min (58 USgpm)	250 bar (3600 psi)	142	55	1 1/4" BSP
FPR 1 1/2	310 L/min (82 USgpm)	210 bar (3000 psi)	155	60	1 1/2" BSP

Where measurements are critical request certified drawings. We reserve the right to change specifications without notice.