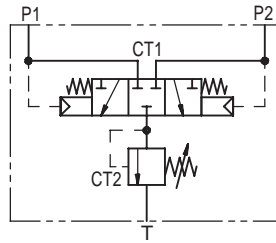




1HSH26 / 1HSH756 HOT OIL SHUTTLE

& PURGE RELIEF VALVE

1HSH*



APPLICATION

This valve in one block provides hot oil shuttle and purge relief for transmission systems to remove charge pump oil from the heated oil side of the system.

OPERATION

When the pressure in line P1 exceeds the pressure in P2, the P2 side is opened to tank through a purge relief removing excess oil at a pre-set pressure, ensuring saturation of the pump's suction line. When the pressure in P2 is greater than P1 the reverse of the above takes place.

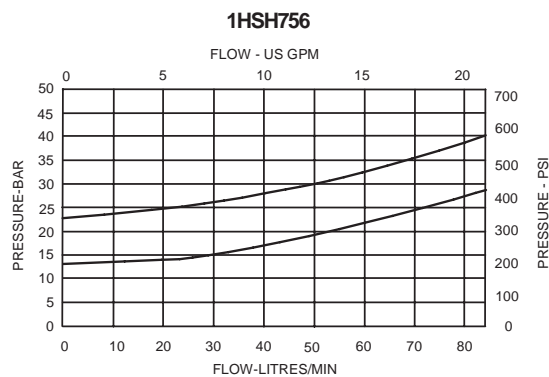
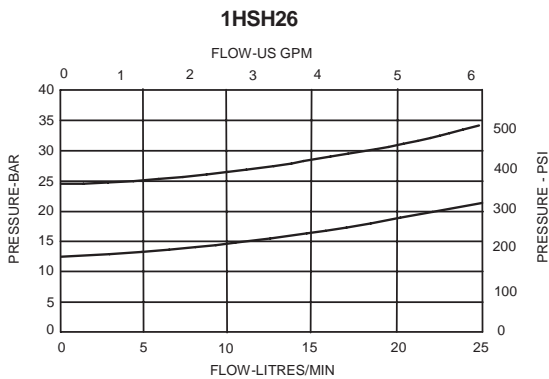
FEATURES

Compact design with through ports makes for easy installation into a system. Pilot style purge relief gives flat pressure drop characteristics for exhausted oil.

SPECIFICATIONS

Figures based on: Oil Temp = 40°C Viscosity = 40 cSt

PRESSURE DROP P1/P2 - T



Max Working Pressure	400 bar (5800 psi)		
Rated Purge Oil Flow	1HSH26 20 litres/min (5 US GPM) 1HSH756 75 litres/min (19 US GPM)		
Max Setting	1HSH26 100 bar (1500 psi) 1HSH756 70 bar (1000 psi)		
Body Material	Steel		
Mounting Position	Line mounted		
Weight	1HSH26 1.75 kg (3.85 lbs) 1HSH756 5.41 kg (11.9 lbs)		
Seal Kit Number	1HSH26	SK1277 (Nitrile)	SK1277V (Viton)
	1HSH756	SK1278 (Nitrile)	SK1278V (Viton)
Recommended Filtration Level	BS5540/4 Class 18/13 (25 micron nominal)		
Operating Temp	-20°C to +90°C		
Nominal Viscosity Range	5 to 500 cSt		

13

Integrated Hydraulics Ltd

Collins Road, Heathcote Ind. Est., Warwick, CV34 6TF, UK.
Tel: +44 (0) 1926 881171 Fax: +44 (0) 1926 315729
Website: www.integratedhydraulics.com

Integrated Hydraulics Inc

7047 Spinach Drive, Mentor, Ohio 44060, USA
Tel: (440) 974 3171 Fax: (440) 974 3170
Website: www.integratedhydraulics.com

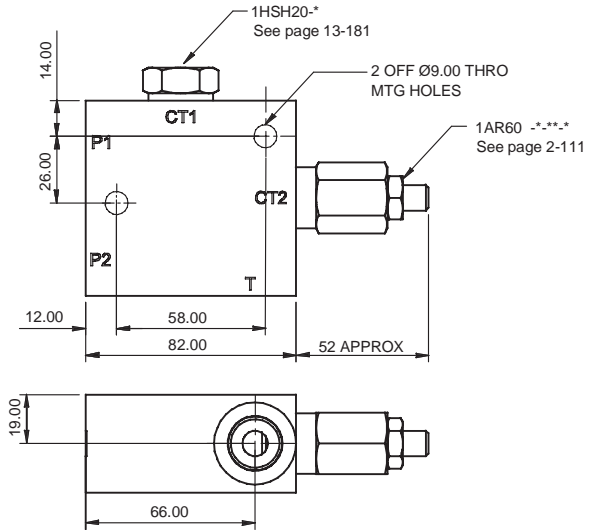
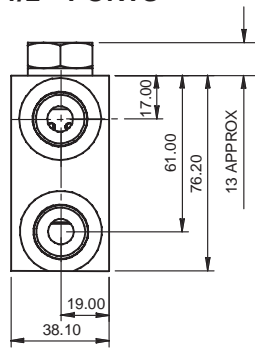
COMPLETE VALVE 1/2" PORTS

BASIC CODE: 1HSH26

Body ONLY part numbers

BSP, steel
1/2" B23886

SAE, steel
1/2" B23890



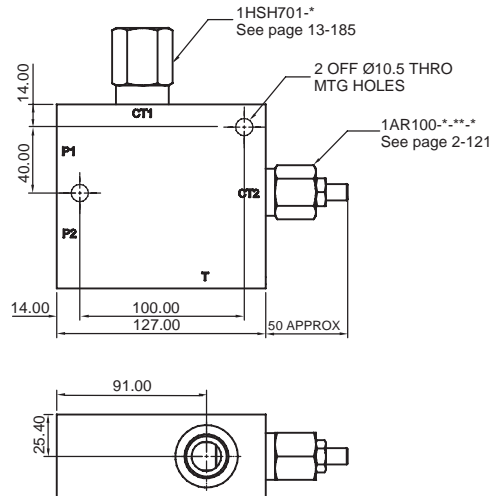
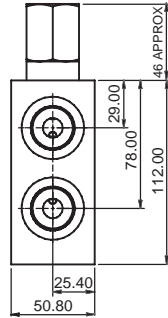
COMPLETE VALVE 3/4" PORTS

BASIC CODE: 1HSH756

Body ONLY part numbers

BSP, steel
3/4" B23895

SAE, steel
3/4" B23899



Where measurements are critical request certified drawings

ORDERING CODE EXAMPLE

1HSH 4W 1.0 7 S 377**

Basic Code
1HSH26 = Complete Valve
1HSH756 = Complete Valve

Port Sizes - Bodied Valves Only
4W = 1/2" BSP 8T = 1/2" SAE
6W = 3/4" BSP 12T = 3/4" SAE

Pilot Pressure
0.3 = 3 bar (1HSH26)
0.4 = 4 bar (1HSH756)
0.6 = 6 bar (1HSH26)
1.0 = 10 bar (1HSH756)

Body Material
377 = Steel

Seals
S = Nitrile (For use with most industrial hydraulic oils)
SV = Viton (For high temperature and most special fluid applications)

Adjustable Pressure Range
7 = 10-70 bar (1HSH756).
Std setting 1AR100 35 bar
10 = 10-100 bar (1HSH26).
Std setting 1AR60 50 bar
Std setting made at 14 litres/min

We reserve the right to change specifications without notice