

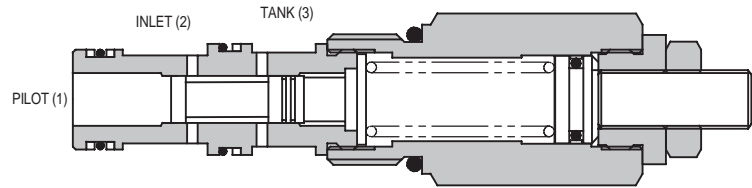
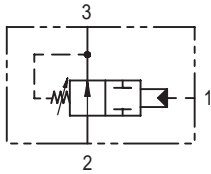


# 1RDS202 REMOTE PILOT OPERATED SPOOL VALVE

## 2 WAY 2 POSITION NORMALLY OPEN / NORMALLY CLOSED

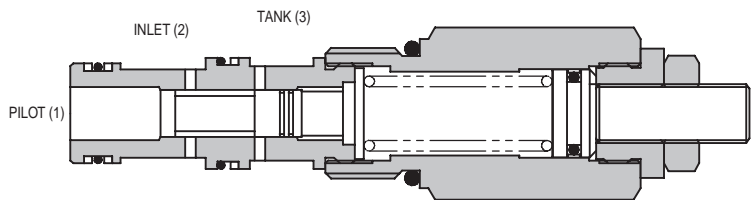
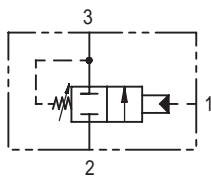
### 1RDS202-1

**NORMALLY OPEN**



### 1RDS202-2

**NORMALLY CLOSED**



## APPLICATION

This valve provides a means of interrupting a line to tank in a normally open or a normally closed form.

The valve is suited for use as a dump valve or a remote relief valve.

## OPERATION

### Normally Open

When pilot pressure reaches a predetermined level, the line between the inlet and tank becomes blocked.

### Normally Closed

When pilot pressure reaches a predetermined level, the inlet is opened to tank.

In both cases when the initial pressure drops the spool moves back to its normal position.

## FEATURES

Cartridge design enabling speedy servicing when mounted in a body or in a composite manifold.

## SPECIFICATIONS

Figures based on: Oil Temp = 40°C Viscosity = 40 cSt

|                                     |  |
|-------------------------------------|--|
| <b>Rated Flow</b>                   | 30 litres/min (8 US GPM)   |
| <b>Max Working Pressure</b>         | 350 bar (5000 psi)   |
| <b>Pilot Pressure</b>               | 10 to 120 bar (145 to 1740 psi)  |
| <b>Cartridge Material</b>           | All working parts hardened and ground steel. External surfaces zinc plated |
| <b>Body Material</b>                | Standard aluminium (up to 210 bar*)<br>Add suffix '377' for steel option   |
| <b>Mounting Position</b>            | Unrestricted   |
| <b>Cavity Number</b>                | A5572 (See Section 17)   |
| <b>Torque Cartridge into Cavity</b> | 60 Nm (44 lbs ft)  |
| <b>Weight</b>                       | 1RDS202 0.24 kg (0.53 lbs)<br>1RDS252 0.64 kg (1.40 lbs)                   |
| <b>Seal Kit Number</b>              | SK339(Nitrile) SK339V (Viton)  |
| <b>Recommended Filtration Level</b> | BS5540/4 Class 18/13<br>(25 micron nominal)                                |
| <b>Operating Temp</b>               | -20°C to +90°C   |
| <b>Leakage</b>                      | 50 millilitres/min nominal   |
| <b>Nominal Viscosity Range</b>      | 5 to 500 cSt   |

**\*For applications above 210 bar please consult our technical department or use the steel body option.**

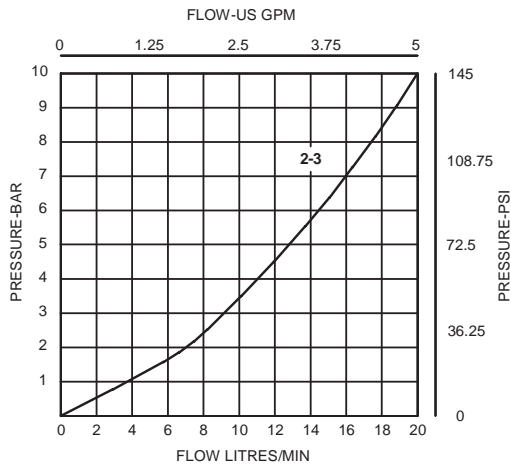
## Integrated Hydraulics Ltd

Collins Road, Heathcote Ind. Est., Warwick, CV34 6TF, UK.  
Tel: +44 (0) 1926 881171 Fax: +44 (0) 1926 315729  
Website: www.integratedhydraulics.com

## Integrated Hydraulics Inc

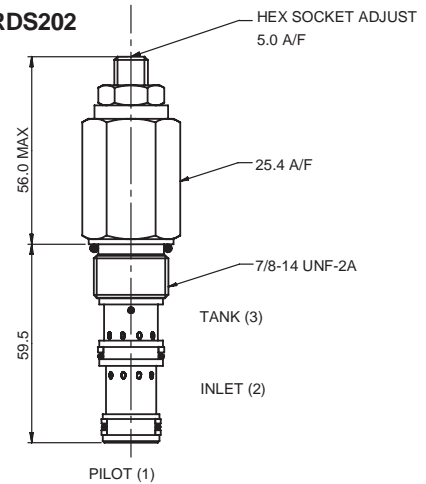
7047 Spinach Drive, Mentor, Ohio 44060, USA  
Tel: (440) 974 3171 Fax: (440) 974 3170  
Website: www.integratedhydraulics.com

## PRESSURE DROP



## CARTRIDGE ONLY

**BASIC CODE: 1RDS202**

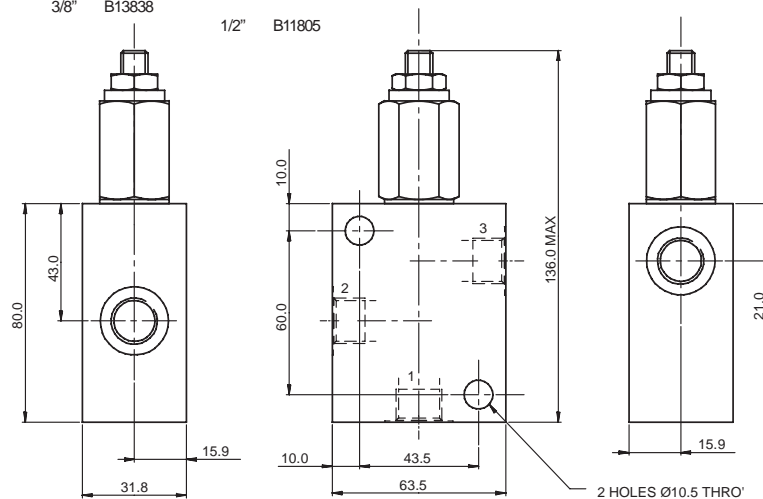


## COMPLETE VALVE 3/8" PORTS

**BASIC CODE: 1RDS252**

Body ONLY part numbers

|                |                |             |             |
|----------------|----------------|-------------|-------------|
| BSP, aluminium | SAE, aluminium | BSP, steel  | SAE, steel  |
| 3/8" B13837    | 3/8" B10645    | 3/8" B13838 | 1/2" B11805 |
|                | 1/2" B7784     |             |             |



Where measurements are critical request certified drawings

## ORDERING CODE EXAMPLE

**1RDS\*\*\* 1 P 3W 12 S**

**Basic Code**

1RDS202 = Cartridge Only  
1RDS252 = Cartridge and Body

**Options**

1 = Normally Open  
2 = Normally Closed

**Adjustment Means**

P = Leakproof Screw Adjustment

**Port Sizes - Bodied Valves Only**

3W = 3/8" BSP  
6T = 3/8" SAE  
8T = 1/2" SAE

**Seals**

S = Nitrile (For use with most industrial hydraulic oils)  
SV = Viton (For high temperature and most special fluid applications)

**Pressure Range @ 14 l/min**

2 = 10- 23 bar. Std setting 20 bar  
6 = 15- 65 bar. Std setting 30 bar  
12 = 20-120 bar. Std setting 60 bar  
Std setting made at 14 litres/min