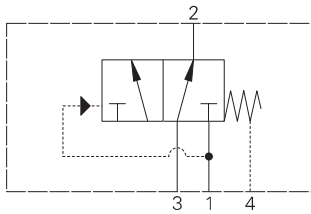


1SB304 - Brake release shuttle valve

Brake release shuttle directional valve
30 L/min (8 USgpm) • 350 bar (5000 psi)



Operation

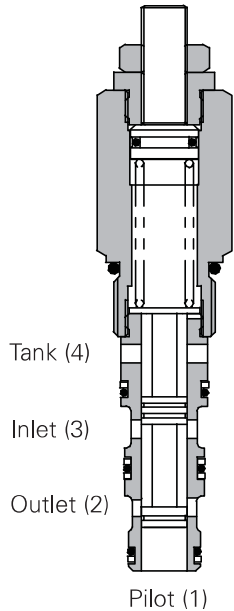
When pressure in the inlet exceeds the set pressure, flow is allowed from inlet to outlet closing off the tank line.

When the inlet pressure is removed, the spool returns to its normal position, opening the outlet port to tank and closing the inlet port.

Features

Cartridge design enabling speedy servicing when mounted in a body or in a composite manifold.

Sectional view



Performance data

Ratings and specifications

Performance data is typical with fluid at 32 cSt (150 SUS)

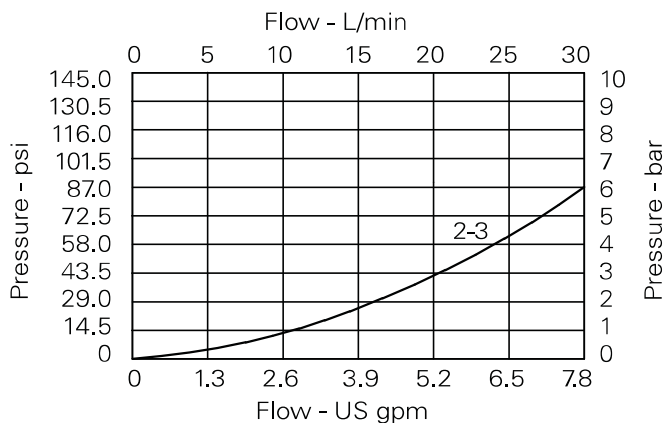
Max working pressure	350 bar (5000 psi)
Rated flow	30 L/min (8 US gpm)
Pilot pressure	10 to 100 bar (145 to 1450 psi) max pilot pressure 210 bar
Internal leakage	50 ml/min nominal
Temperature range	-30° to 90°C (-22° to 194°F)
Cavity	A5302 (see Section M)
Torque cartridge into cavity	60 Nm (44 lbs ft)
Mounting position	Unrestricted
Filtration	BS5540/4 Class 18/13 (25 micron or better)
Nominal viscosity range	5 to 500 cSt
Cartridge material	All working parts hardened and ground steel. External surfaces zinc plated.
Standard housing materials	Aluminum and Steel
Weight	.24 kg (.53 lbs)
Seal kit	SK645 (Nitrile) SK645V (Viton®)

Viton is a registered trademark of E.I. DuPont

Description

This valve provides a means of supplying oil to the outlet from the inlet when a pre-set pressure is reached. On removal of this pressure, inlet closes opening outlet to tank. Ideal for use in braking systems where a pressure is required in the main system before the brake is removed.

Pressure drop

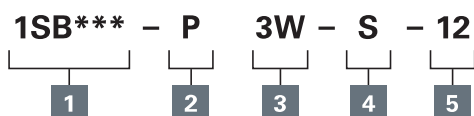


Where measurements are critical request certified drawings. We reserve the right to change specifications without notice.

1SB304 - Brake release shuttle valve

Brake release shuttle directional valve
30 L/min (8 USgpm) • 350 bar (5000 psi)

Model code



1 Function

1SB304 - Cartridge only

2 Adjustment means

P - Leakproof screw adjustment

3 Port size

Code	Port size	Housing number	
		Aluminum	Steel
0	Cartridge only		
3W	3/8" BSP	B13602	B13603
6T	3/8" SAE	B21661	B21660

4 Seals

S - Nitrile
SV - Viton

5 Pressure range

Note: Code based on pressure in bar.

6 - 10-60 bar.

Std setting 30 bar

12 - 20-100 bar.

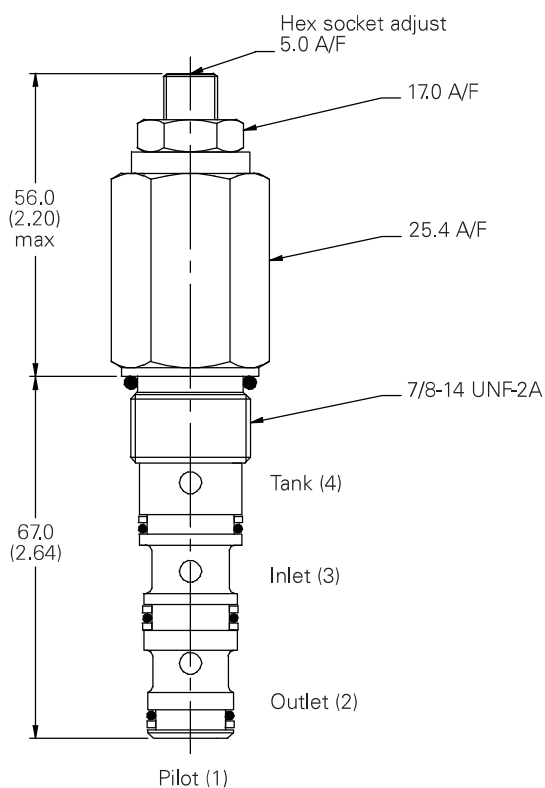
Std setting 60 bar

Std setting made at 14 L/min
(3.8 USgpm).

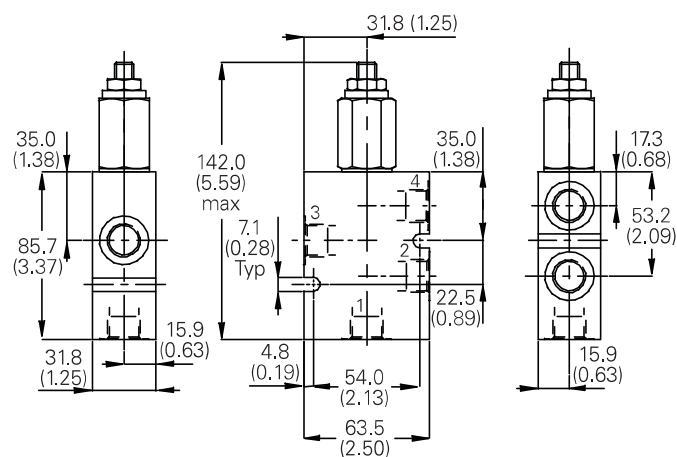
Dimensions

mm (inch)

Cartridge only



Installation drawing



Where measurements are critical request certified drawings. We reserve the right to change specifications without notice.