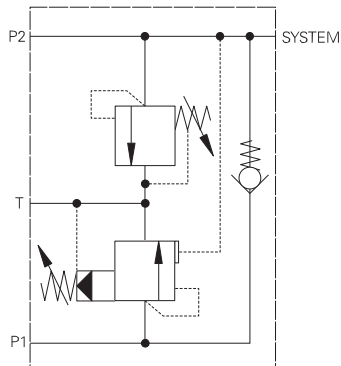


IUL255 - Unloading valve

Two pump
Up to 200 L/min (40 USgpm) • 350 bar (5000 psi)



Operation

Pump inlet to P1 and P2 is combined to give maximum flow at low pressure. When the load pressure increases to the valve setting the high flow (low pressure) pump is bypassed from P1 to tank allowing nearly all system power to be used for the high pressure pump.

(See graph for the pressure drop of the dumped flow). The system relief valve provides protection by limiting the maximum pressure in the system line.

Features

This is a self contained system including two replaceable cartridges with full adjustment through their respective ranges. Hardened working components give long, trouble-free life and single body reduces plumbing to a minimum.

Performance data

Ratings and specifications

Performance data is typical with fluid at 32 cSt (150 SUS)

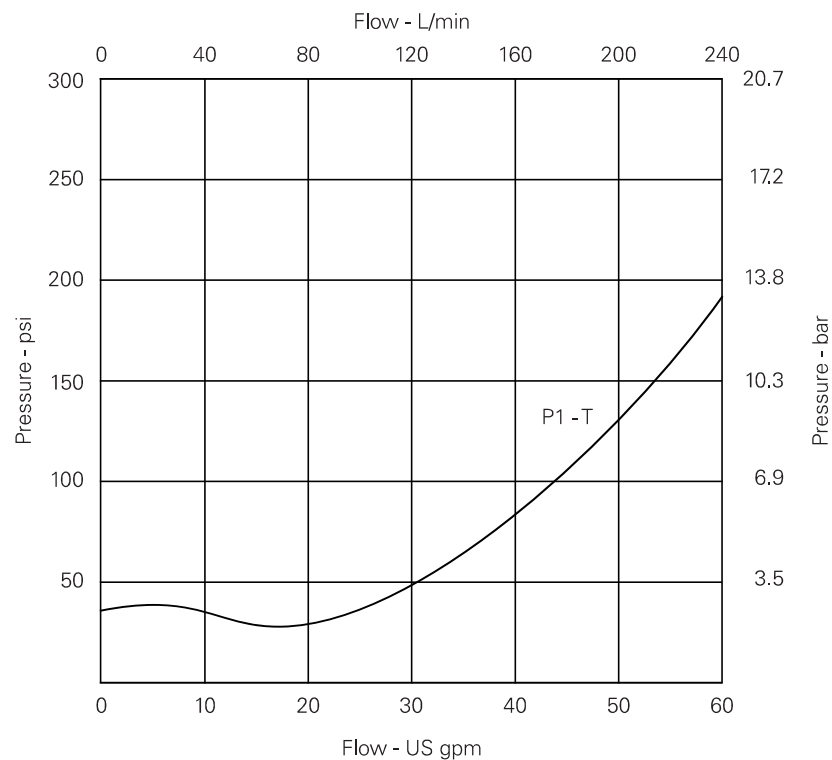
Rated flow	low flow/high pressure (P2) 150 L/min (40 USgpm) high flow/low pressure (P1) 200 L/min (52 USgpm)
Max setting	350 bar (5000 psi)
Cartridge material	Working parts hardened & ground steel External surface zinc plated
Body material	Standard - steel
Mounting position	Unrestricted
Weight	3.15 kg (6.93 lbs)
Seal kit number	SK671 (Nitrile) SK671V (Viton)
Recommended filtration level	BS5540/4 Class 18/13 (25 micron nominal)
Operating Temp	-30°C to +90°C (-22° to 194° F)
Nominal viscosity range	5 to 500 cSt

Viton is a registered trademark of E.I. DuPont

Description

Two-pump unloader valves are used in systems with combinations of two (or more) pumps to give high flow at low pressure and high pressure at low flow. The valves bypass the flow from the low pressure pump(s) to tank at a pre-set pressure. This allows pump selection to give, for example, rapid advance and high power compaction with the most economic usage of system components and energy requirements.

Pressure drop

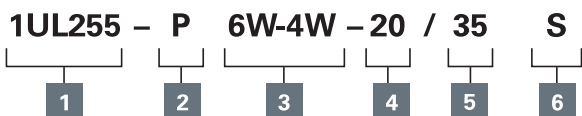


Where measurements are critical request certified drawings. We reserve the right to change specifications without notice.

IUL255 - Unloading valve

Up to 200 L/min (40 USgpm) • 350 bar (5000 psi)

Model code



1 Basic code

1UL255 - Complete Valve

2 Adjustment means

P - Leakproof Screw Adjustment

3 Port sizes -

4 Adjustable low pressure range

Note: Code based on pressure in bar.

20 - 30-210 bar.
Std setting 100 bar

35 - 150-350 bar.
Std setting 200 bar

5 Adjustable high pressure range

Note: Code based on pressure in bar.

17 - 35-175 bar.
Std setting 105 bar

28 - 75-285 bar.
Std setting 175 bar

35 - 114-350 bar.
Std setting 280 bar

6 Seals

S - Nitrile (For use with most industrial hydraulic oils)

SV - Viton (For high temperature and most special fluid applications)

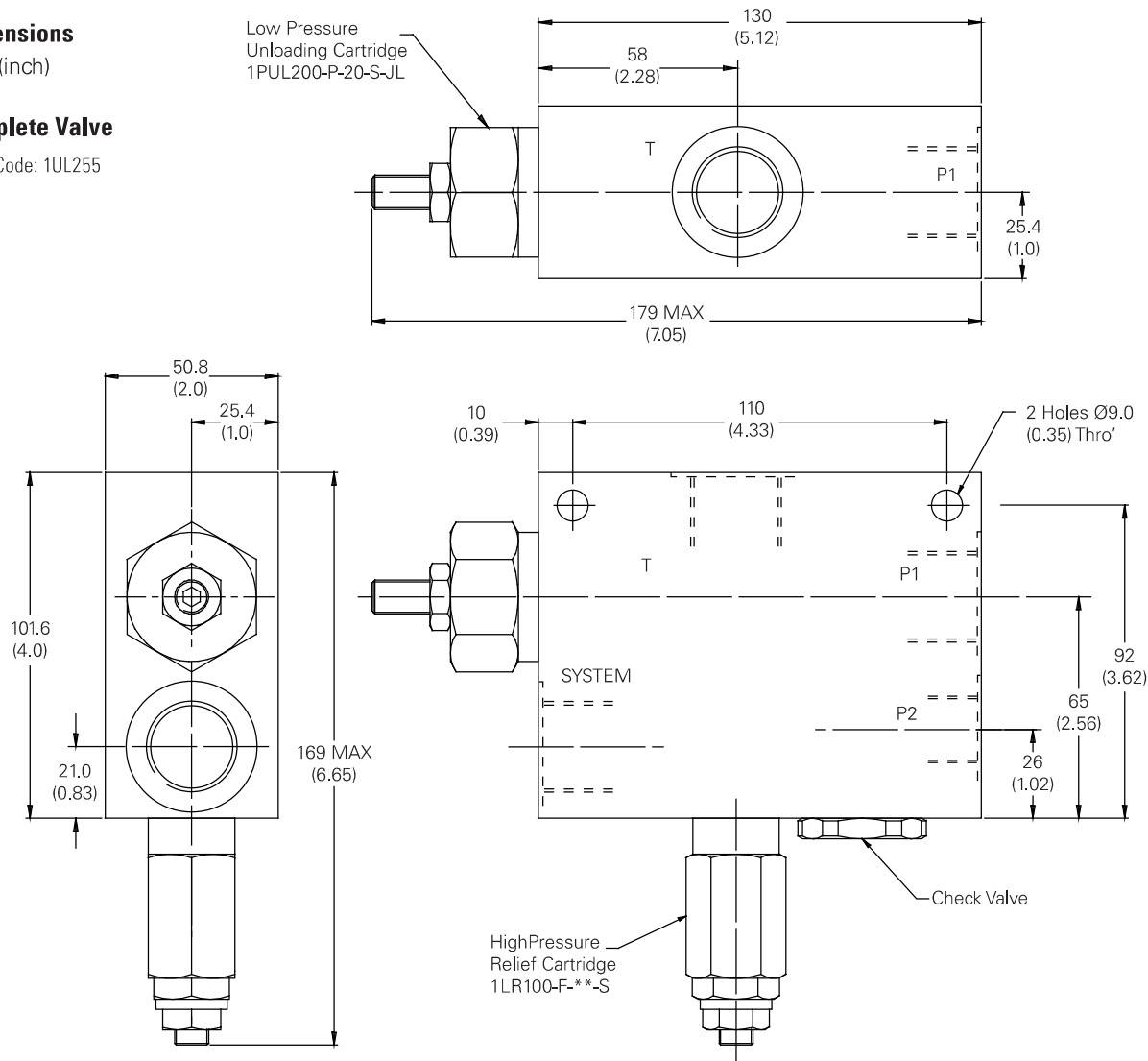
Code	System P1 & T	P2	Housing number (steel)
6W-4W	3/4" BSPP	1/2" BSPP	BXP24051-6W-4W-S-377

Dimensions

mm (inch)

Complete Valve

Basic Code: 1UL255



Where measurements are critical request certified drawings. We reserve the right to change specifications without notice.