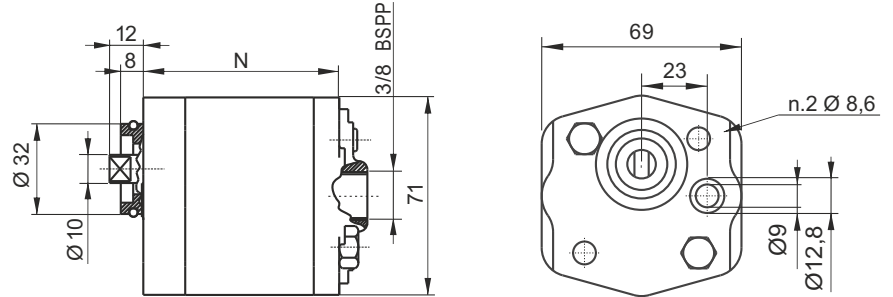


# SECTION C



## K SERIES GEAR PUMPS, GROUP 1

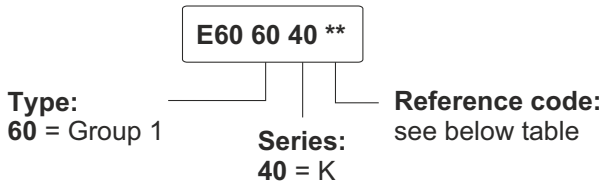


### Main features

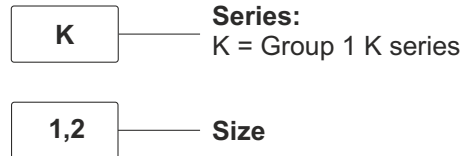
|                     |   |
|---------------------|---|
| Oil temperature     | -15 ÷ +80 °C  |
| Inlet pressure      | 0,7 < P < 3,0 bar (absolute pressure)   |
| Fixing bolts        | 2 x M8 8.8 class steel<br>tightening torque: 21 ÷ 25 Nm   |
| Pressure definition | Peak pressure: cycle 2 s ON<br>Intermittent pressure: cycle 20 s ON<br>Continuous pressure: cycle always ON |

Standard rotation direction: clockwise (from shaft side).  
Counterclockwise rotation pumps can be mounted on request.  
Ask our sales department.

### Spare part code



### Assembly code



### Available range

| Nominal size | Displacement [cc/rev] | Peak pressure [bar] | Intermittent pressure [bar] | Continuous pressure [bar] | Max speed [rpm] | N [mm] | Bolts* [mm] | Spare part code | Weight [Kg] |
|--------------|-----------------------|---------------------|-----------------------------|---------------------------|-----------------|--------|-------------|-----------------|-------------|
| K0,9         | 0,89                  | 250                 | 230                         | 210                       | 4500            | 61,6   | M8x80       | E60604001       | 0,73        |
| K1,2         | 1,27                  | 250                 | 230                         | 210                       | 4500            | 63,1   | M8x80       | E60604002       | 0,75        |
| K1,6         | 1,66                  | 250                 | 230                         | 210                       | 4500            | 64,6   | M8x80       | E60604035       | 0,77        |
| K2,1         | 2,17                  | 250                 | 230                         | 210                       | 4500            | 66,3   | M8x85       | E60604004       | 0,79        |
| K2,7         | 2,8                   | 250                 | 230                         | 210                       | 4500            | 68,8   | M8x85       | E60604005       | 0,82        |
| K3,2         | 3,3                   | 250                 | 230                         | 210                       | 4500            | 70,4   | M8x85       | E60604006       | 0,86        |
| K3,7         | 3,8                   | 230                 | 210                         | 180                       | 3600            | 72,5   | M8x90       | E60604007       | 0,88        |
| K4,2         | 4,3                   | 230                 | 210                         | 180                       | 3600            | 74,3   | M8x90       | E60604008       | 0,90        |
| K5,0         | 5,1                   | 210                 | 180                         | 140                       | 3000            | 77,3   | M8x95       | E60604009       | 0,94        |
| K6,0         | 6,0                   | 210                 | 180                         | 140                       | 3000            | 81,3   | M8x100      | E60604010       | 0,98        |
| K7,9         | 7,9                   | 180                 | 140                         | 100                       | 2800            | 88,9   | M8x105      | E60604012       | 1,10        |

\* One or more washers are always fitted to secure the bolt engagement