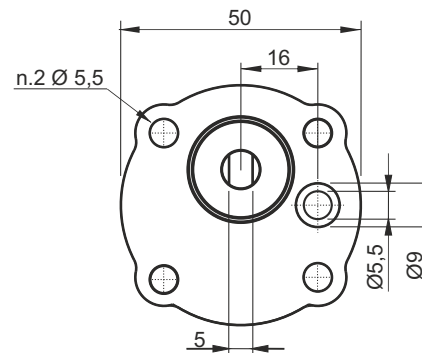
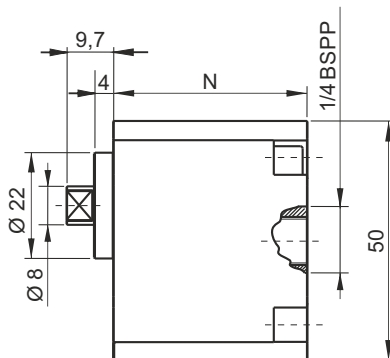


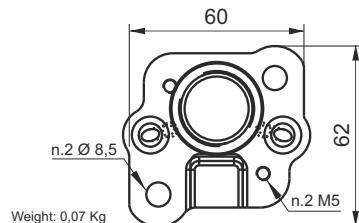
H SERIES HIGH PRESSURE GEAR PUMPS, GROUP 0



Main features

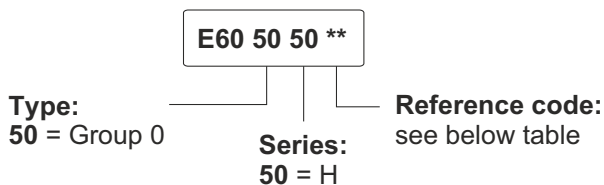
Oil temperature	-15 ÷ +80 °C
Inlet pressure	0,7 < P < 3,0 bar
Fixing bolts	2 x M5 8.8 steel class tightening torque: 25 Nm
Pressure definition	Peak pressure: cycle 2 s ON Intermittent pressure: cycle 20 s ON Continuous pressure: cycle always ON

Aluminium adapter flange for group 0
Code: E60513025

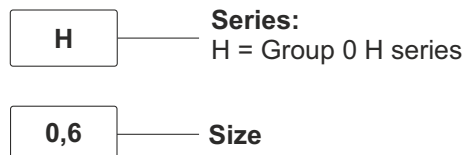


Standard rotation direction: clockwise rotation (from shaft side).
Counterclockwise rotation pumps can be mounted on request.
Ask our sales department.

Spare part code



Assembly code



Available range

Nominal size	Displacement [cc/rev]	Peak pressure [bar]	Intermittent pressure [bar]	Continuous pressure [bar]	Max speed [rpm]	N [mm]	Bolts* [mm]	Spare part code	Weight [Kg]
H0,1	0,2	280	270	250	7000	36,4	M5x50	E60505001	0,26
H0,2	0,26	280	270	250	7000	36,8	M5x50	E60505002	0,27
H0,4	0,38	280	270	250	7000	37,8	M5x50	E60505004	0,27
H0,6	0,64	280	270	250	7000	39,5	M5x50	E60505006	0,28

* One or more washers are always fitted to secure the bolt engagement
Other pumps with different displacement/pressure/speed are available on request.