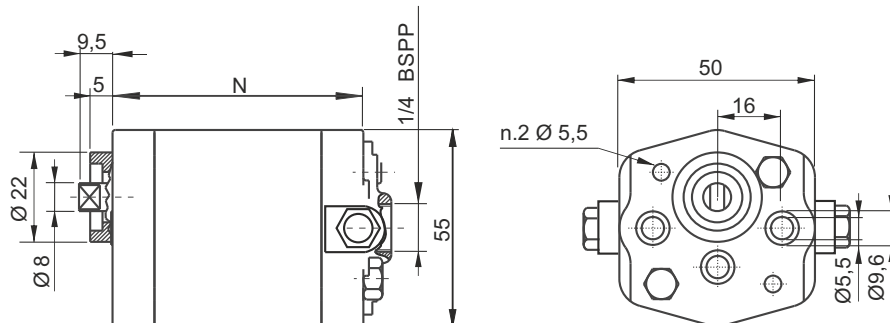


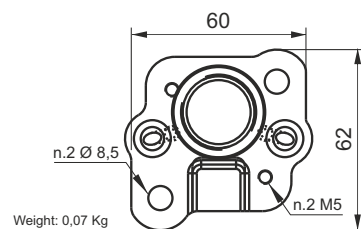
R SERIES BIDIRECTIONAL GEAR PUMPS, GROUP 0



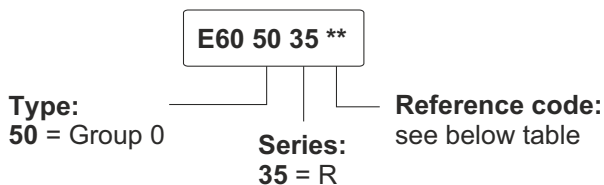
Main features

|                     |   |
|---------------------|---|
| Oil temperature     | -15 ÷ +80 °C  |
| Inlet pressure      | 0,7 < P < 3,0 bar (absolute pressure)   |
| Fixing bolts        | 2 x M5 8.8 class steel<br>tightening torque: 8 ÷ 9,5 Nm   |
| Pressure definition | Peak pressure: cycle 2 s ON<br>Intermittent pressure: cycle 20 s ON<br>Continuous pressure: cycle always ON |

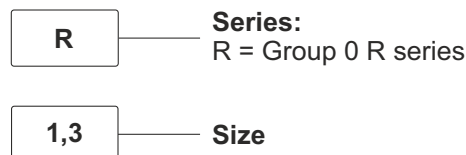
Aluminium adapter flange for group 0  
Code: E60513025



Spare part code



Assembly code



Available range

| Nominal size | Displacement [cc/rev] | Peak pressure [bar] | Intermittent pressure [bar] | Continuous pressure [bar] | Max speed [rpm] | N [mm] | Bolts* [mm] | Spare part code | Weight [Kg] |
|--------------|-----------------------|---------------------|-----------------------------|---------------------------|-----------------|--------|-------------|-----------------|-------------|
| R0,1         | 0,19                  | 190                 | 170                         | 150                       | 7000            | 44,5   | M5x55       | E60503501       | 0,38        |
| R0,2         | 0,26                  | 190                 | 170                         | 150                       | 7000            | 45,6   | M5x55       | E60503502       | 0,39        |
| R0,3         | 0,32                  | 190                 | 170                         | 150                       | 7000            | 46,5   | M5x60       | E60503503       | 0,42        |
| R0,4         | 0,38                  | 190                 | 170                         | 150                       | 7000            | 47,7   | M5x60       | E60503504       | 0,43        |
| R0,5         | 0,51                  | 190                 | 170                         | 150                       | 7000            | 49,6   | M5x60       | E60503505       | 0,44        |
| R0,7         | 0,64                  | 190                 | 170                         | 150                       | 7000            | 55,6   | M5x65       | E60503506       | 0,46        |
| R0,9         | 0,88                  | 190                 | 170                         | 150                       | 7000            | 56,6   | M5x70       | E60503509       | 0,48        |
| R1,3         | 1,25                  | 190                 | 170                         | 150                       | 5000            | 59,6   | M5x70       | E60503513       | 0,49        |
| R1,5         | 1,5                   | 190                 | 170                         | 150                       | 4000            | 61,6   | M5x75       | E60503515       | 0,58        |

\* One or more washers are always fitted to secure the bolt engagement  
Other pumps with different displacement/pressure/speed are available on request.