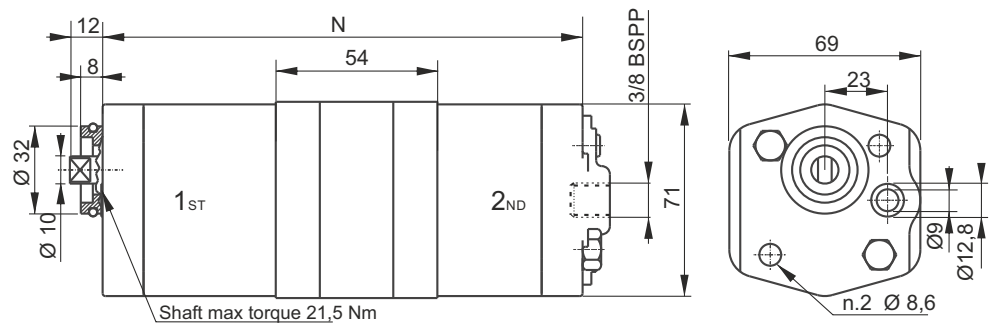


SECTION C



K SERIES TANDEM GEAR PUMPS, GROUP 1



Shaft max torque 21,5 Nm

Common 3/8" BSPP inlet port (on the rear cover) alternatively individual side inlet ports are available

Main features

Oil temperature	-15 ÷ +80 °C
Inlet pressure	0,7 < P < 3,0 bar (absolute pressure)
Fixing bolts	2 x M8 8.8 class steel tightening torque: 21 ÷ 25 Nm
Pressure definition	Peak pressure: cycle 2 s ON Intermittent pressure: cycle 20 s ON Continuous pressure: cycle always ON

Choosing the right pump combination:

- Check that the power absorption of the front element is equal to or higher than the rear one
- Pump performance and features are the same as the details of the corresponding single pumps
- Tandem pump maximum rotation speed is determined by the lowest speed between maximum rotation speeds of each single pump.
- Torque applied on the shaft of the front pump is the sum of the torques absorbed by the two pumps (see above diagram); this value must never go over the limit allowed for the shaft (21,5 Nm).

Spare part code

E60 60 ** ** HL

Type:
60 = Group 1

Reference code:
see below table

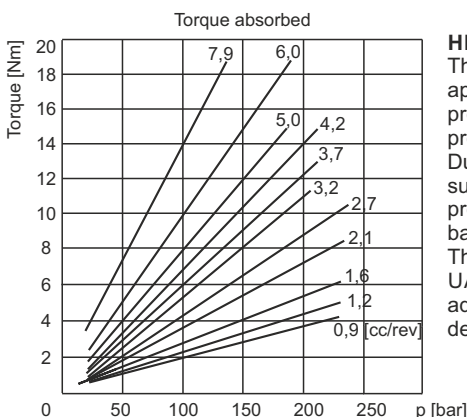
Series:
HL = Hi-Lo

Assembly code

- K** — Series:
K = Group 1 K series
- 1,2** — Size 1st section
- +**
- 5** — Size 2nd section
- HL** — Option:
Hi - Lo execution

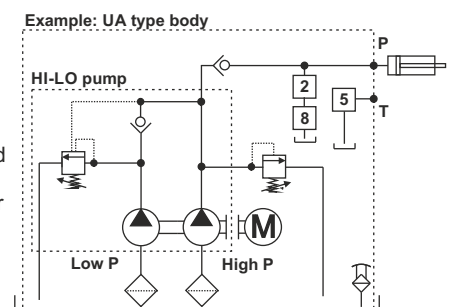
Available range

Nominal size	Displacement [cc/rev]	Peak pressure [bar]	Intermittent pressure [bar]	Continuous pressure [bar]	Preset unloading pressure* [bar]	Max speed [rpm]	N [mm]	Bolts** [mm]	Spare part code	Weight [Kg]
K0,9+3,2HL	0,89 + 3,3	250	230	210	42±5	1750	133,2	M8x150	E60600932HL	2,12
K1,2+5,0HL	1,27 + 5,1	250	230	210	42±5	1750	141,3	M8x160	E60601250HL	2,29



HI-LO

This is an efficient and energy saving solution for applications where a fast approach and a high pressure working phase are needed (industrial presses, garbage compactors, balers,...). During the high speed phase both pumps are supplying flow to the system while during the high pressure phase, the low pressure pump is discharged back to tank with no load. This solution can be conveniently assembled with our UA or UB or U4 central manifold without any additional kit. Ask to our technical office for more details.



* One or more washers are always fitted to secure the bolt engagement

Other pumps with different displacement/pressure/speed are available on request.

* Preset value of the unloading valve can be adjusted between 15 - 60 bar.