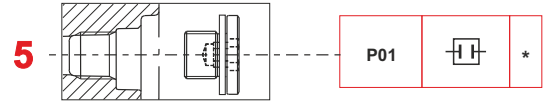
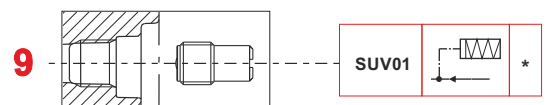
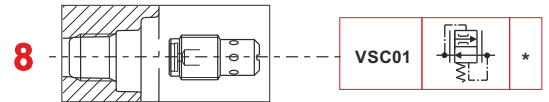


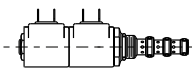
UNIVERSAL CENTRAL MANIFOLDS «U4» - CAVITIES & INTEGRAL COMPONENTS



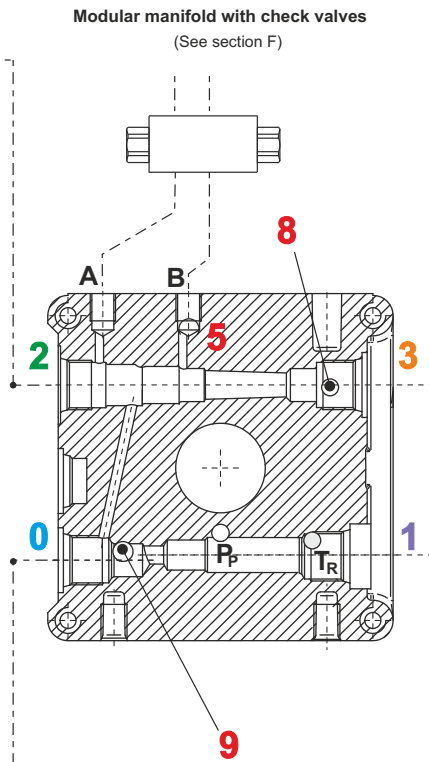
To ensure proper functionality cavity 5 must be always plugged



4VA2		MSV4VA2
4VB2		MSV4VB2
4VC2		MSV4VC2
4VE2		MSV4VE2
4VA11C		MSV4VA11C



Modular manifold with check valves
(See section F)



	VCF6		R
	CSB04		S
	E70100004		L
	E70100006		P
	VSC6		F

J		VUC20	
S		CSB04	
L		E70100004	
N		E70100002	

	E70200010		XP
	VMDC20		V*

Hydraulic scheme

