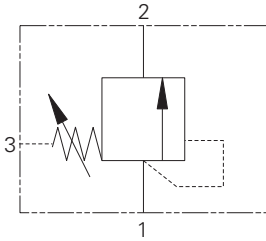


# PSV7-10 - Pressure Sequence Valve

Spool, direct acting, normally closed, internal pilot, external drain  
 23 L/min (6 USgpm) • 210 bar (3000 psi)



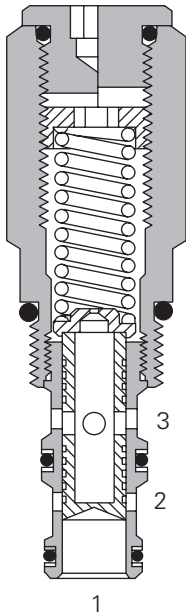
## Operation

As with the direct acting relief valves, when the pressure exceeds the spring force, the spool moves back, opening the inlet to outlet.

## Features

Stable, quiet operation. Cartridge construction gives maximum flexibility in mounting. Offering good repeatability and reset.

## Sectional View



## Performance Data

### Ratings and Specifications

Performance data is typical with fluid at 21,8 cSt (105 SUS) and 49° C (120° F)

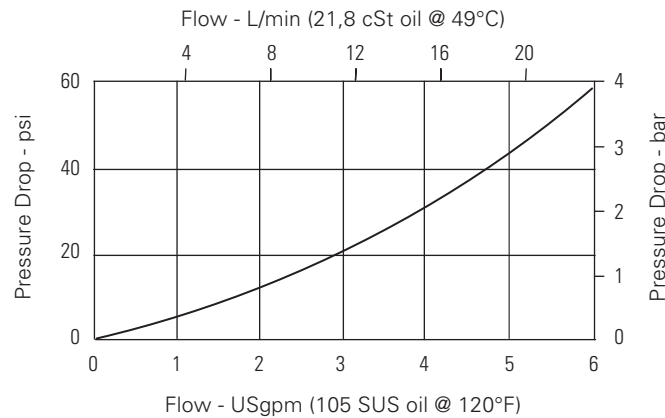
Typical application pressure	210 bar (3000 psi)
Cartridge fatigue pressure (infinite life)	210 bar (3000 psi)
Maximum sequence pressure	125 bar (1800 psi)
Rated flow	23 L/min (6 USgpm)
Cavity	C-10-3
Standard housing materials	Aluminum
Temperature range	-40° to 120°C (-40° to 248°F)
Fluids	All general purpose hydraulic fluids such as: MIL-H-5606, SAE 10, SAE 20, etc.
Filtration	Cleanliness Code 18/16/13
Weight cartridge only	0,24 kg (0.53 lbs)
Seal kits	565804 Buna-N 889599 Viton®

Viton is a registered trademark of E.I. DuPont

## Description

## Pressure Drop Curve

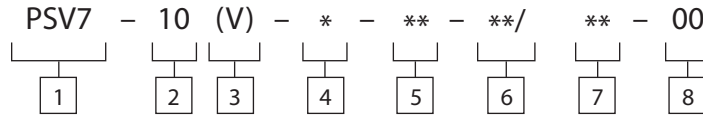
Cartridge only



# PSV7-10 - Pressure Sequence Valve

Spool, direct acting, normally closed, internal pilot, external drain  
 23 L/min (6 USgpm) • 210 bar (3000 psi)

## Model Code



**1** Function  
 PSV7 - Pressure sequence valve

**2** Size  
 10 - 10 size

**3** Seal material  
 Blank - Buna-N  
 V - Viton®

**4** Adjustment  
 C - Cap  
 F - Factory set  
 I - Internal  
 K - Knob  
 S - Screw

**5** Port Size  
 0 - Cartridge only

Code	Port Size	Housing Number	Aluminum Light duty	Aluminum Fatigue rated
3B	3/8" BSPP	02-173358	-	-
6T	SAE 6	566162	-	-
2G	3/4" BSPP	-	-	876705
3G	3/8" BSPP	-	-	876714
6H	SAE 6	-	-	876704
8H	SAE 8	-	-	876711

See section J for housing.

**6** Sequence Pressure Range

Note: Code based on pressure in psi.

2 -	3,5-10 bar (50-150 psi)	5 -	7-30 bar (100-450 psi)
3 -	5-20 bar (75-300 psi)	10 -	14-65 bar (200-950 psi)
		18 -	20-125 bar (300-1800 psi)

**7** Setting pressure  
 Within ranges in **6**  
 Blank - Normal factory setting at approximate mid-range. User requested settings in 3,45 bar (50 psi) steps, Coded as in the following examples:  
 10 - 70 bar (1000 psi)  
 10.5 - 72,4 bar (1050 psi)

**8** Special features  
 00 - None  
 (Only required if valve has special features, omitted if "00.")  
 SS - 316 Stainless Steel external components

## Dimensions

mm (inch)

Torque cartridge in aluminum housing to 47-54 Nm (35-40 ft. lbs)

