



# S205 / S206 Directional Control Valve - 2-Way, 2-Position Poppet

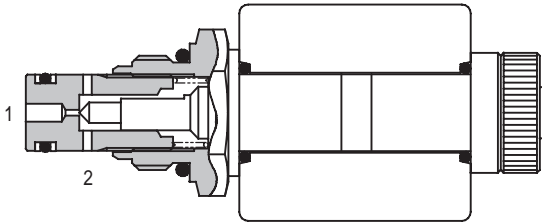
1 litre/min (0.25 US GPM) • 210 bar (3000 PSI)

## S205

**NORMALLY OPEN  
(as shown)**

## S206

**NORMALLY CLOSED**



## FEATURES

- Pilot flow capacity with reduced space requirements.
- No dynamic seals.
- Standard valve bodies and common cavities.
- One-piece encapsulated coil with minimal amperage draw.
- Oil immersed armature solenoid.
- Various coil terminals and voltages.
- Coil interchangeability with all Series S2 valves.
- Manual override, seal variations and other options available.
- Sealed coil arrangement to protect stem from corrosion.

## APPLICATION

To give on-off control of flows up to 1 litre/min (0.25 US GPM) and pressures up to 210 bar (3000 psi). Typical usage includes the control of the pilot or vent flow of another valve, for example a ventable relief valve. (See Section 2).

## COIL INFORMATION

(See Page 11-1021)

Part Number: C13-\*-/14

Voltage available: 12, 24 VDC  
110, 220 VAC\*

\* AC coils must be used with a rectifying connector.

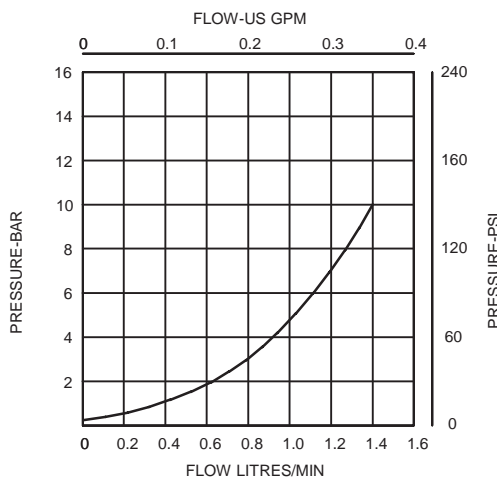
## SPECIFICATIONS

Basic Model Code	S205 (N.O.)	S206 (N.C.)
Symbol		
Max. Working Pressure	210 bar (3000 psi)	
Flow Rating	1 litre/min (0.25 US GPM)	
Nominal Flow (at Delta P = 5 bar (70 psi))	1 litre/min (0.25 US GPM)	
Internal Leakage	0.3 ml/min (5 dpm) when closed 210 bar differential at 32 centistokes	
Temperature Range	-20 to +120°C (-4 to +248°F)	
Nominal Viscosity Range	15 to 250 centistokes	
Recommended Filtration	BS5540/4 18/13 (25 micron or better)	
Fluid	Compatible with most general purpose hydraulic fluids	
Seal Material	Standard nitrile with PTFE back up rings	
Seal Kit Number	SK1043 (Nitrile) SK1043V (Viton)	
Mounting Position	Unrestricted	
Cartridge Weight	0.1 kg (0.2 lbs)	
Coil Weight	0.2 kg (0.4 lbs)	
Cavity Number	A879 (See Section 17)	
Torque into Cavity	22 Nm (15 lbs ft)	
Electrical Data	See coil data sheet	
Line Body Material	Aluminium Alloy	

11

## PRESSURE DROP v's FLOW

Viscosity = 32 cSt (150 SSU)



## Integrated Hydraulics Ltd

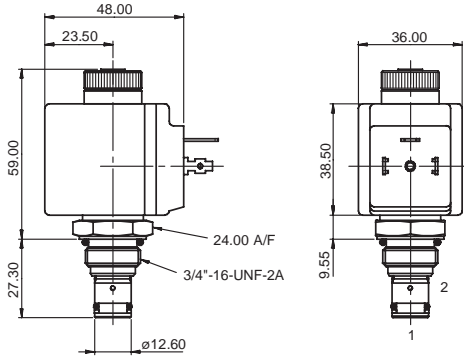
Collins Road, Heathcote Ind. Est., Warwick, CV34 6TF, UK.  
Tel: +44 (0) 1926 881171 Fax: +44 (0) 1926 315729  
Website: www.integratedhydraulics.com

## Integrated Hydraulics Inc

7047 Spinach Drive, Mentor, Ohio 44060, USA  
Tel: (440) 974 3171 Fax: (440) 974 3170  
Website: www.integratedhydraulics.com

### CARTRIDGE ONLY

**BASIC CODE: S205 (Normally Open)**



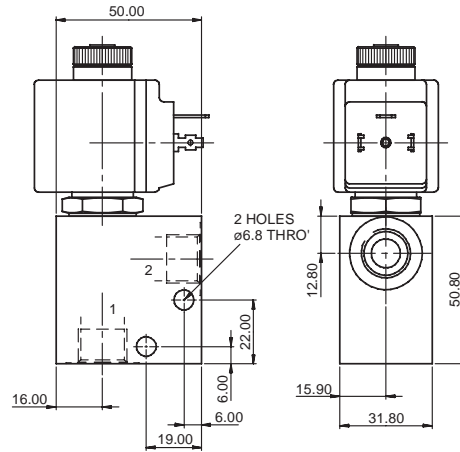
### COMPLETE VALVE

**1/4" 3/8" PORTS**

**BASIC CODE: S205 (Normally Open)**

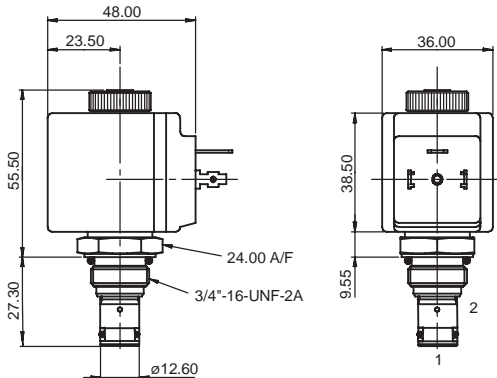
Body ONLY part numbers

BSP, aluminium		SAE, aluminium		BSP, steel		SAE, steel	
1/4"	A1485	3/8"	A15676	3/8"	A14175	3/8"	A14843
3/8"	A1043						



### CARTRIDGE ONLY

**BASIC CODE: S206 (Normally Closed)**



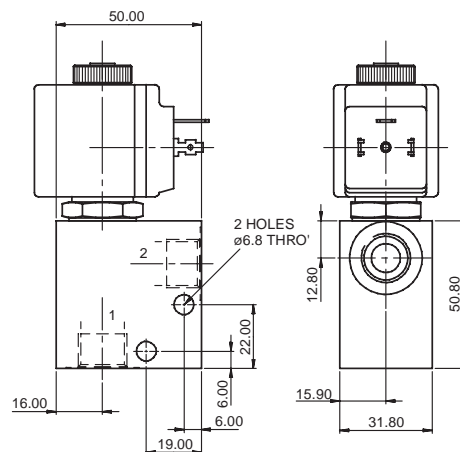
### COMPLETE VALVE

**1/4" 3/8" PORTS**

**BASIC CODE: S206 (Normally Closed)**

Body ONLY part numbers

BSP, aluminium		SAE, aluminium		BSP, steel		SAE, steel	
1/4"	A1485	3/8"	A15676	3/8"	A14175	3/8"	A14843
3/8"	A1043						



Where measurements are critical request certified drawings

### ORDERING CODE EXAMPLE

**S205**

**N**

**H**

**24**

**3W**

**Basic Code**

S205 = (normally open)  
S206 = (normally closed)

**Seals**

N = Nitrile  
V = Viton

**Manual Override (consult factory for availability)**

1 = Push and twist (S206 Only)  
2 = Screw (S205 & S206)

**Port Sizes**

2W = 1/4" BSP  
3W = 3/8" BSP  
6T = 3/8" SAE

**Voltage**

12 = 12 VDC  
24 = 24 VDC  
110 = 110 VAC  
220 = 220 VAC

**Coil Termination**

H = DIN43650  
F = Flying Leads  
DM = Deutsch Moulded  
Other terminations available on request

We reserve the right to change specifications without notice