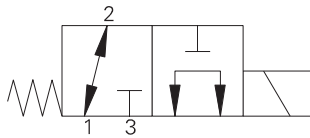


SV1 1-8-3/3M - Solenoid valve

3-way, 2-position spool type solenoid valve
 11 L/min (3 USgpm) • 350 bar (5000 psi)

A



Operation

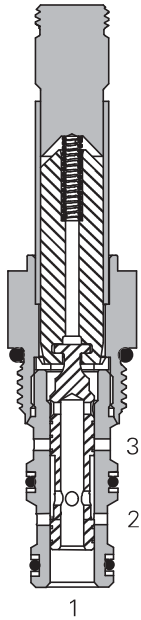
In the de-energized position this valve allows flow from port 2 to 1 while port 3 is blocked.

In the energized position flow is allowed from port 1 to port 3 while port 2 is blocked.

Features

Hardened, ground and honed working parts to limit leakage. IP69K Tough coil compatibility. Continuously rated. Compact design with low pressure drop. Rated pressure on all ports.

Sectional view



Performance data

Ratings and specifications

Performance data is typical with fluid at 21,8 cSt (105 SUS) and 49°C (120°F)

| | |
|--|---|
| Typical application pressure (all ports) | 350 bar (5000 psi) |
| Cartridge fatigue pressure (infinite life) | 310 bar (4500 psi) |
| Rated flow | 11 L/min (3 USgpm) |
| Internal leakage, combined port 2 and port 1 | 140 cm ³ /min (8.5 in ³ /min) max @ 350 bar (5000 psi) |
| Temperature range | -40° to 100°C (-40° to 212°F) |
| Coil duty | Continuous from 85% to 110% of nominal voltage |
| Cavity | C-8-3 |
| Fluids | All general purpose hydraulic fluids such as: MIL-H-5606, SAE 10, SAE 20 etc. |
| Filtration | Cleanliness code 18/16/13 |
| Housing material (standard) | Steel |
| Weight Cartridge only | 0,13 kg (0.28 lbs) |
| Seal kit | 02-160755 (Buna-N), 02-160756 (Viton®) |

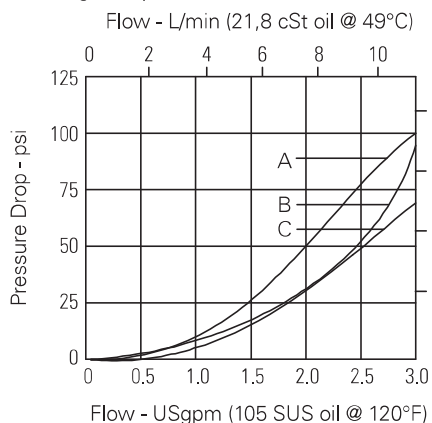
Viton is a registered trademark of E.I. DuPont

Description

This is a 3-way 2-position, high pressure, direct acting, spool type solenoid valve. This valve can be used in applications requiring separate pressure and tank lines, such as a single acting cylinder or any other application where a three way two position solenoid valve is needed.

Pressure drop

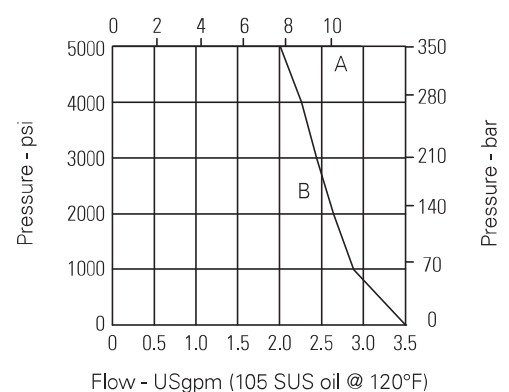
Cartridge only



Pressure drop vs. Flow

- A** - Port 1 to 2 and 1 to 3
- B** - Port 3 to 1
- C** - Port 2 to 1

Flow - L/min (21,8 cSt oil @ 49°C)



Operating Limits

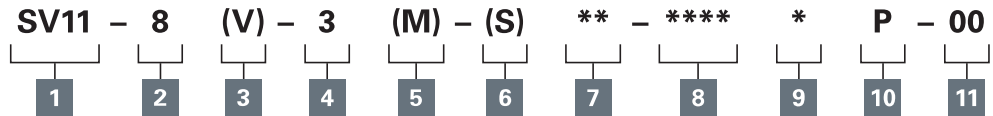
- A** - Normally open & closed
- B** - Selector 1 to 2 and 1 to 3

Where measurements are critical request certified drawings. We reserve the right to change specifications without notice.

SV11-8-3/3M - Solenoid valve

3-way, 2-position spool type solenoid valve
11 L/min (3 USgpm) • 350 bar (5000 psi)

Model code



A

1 Function

SV11 - Solenoid valve

2 Size

8 - 8 size

3 Seal material

Blank - Buna-N
V - Viton®

4 Style

3 - 3-way, 2 position

5 Manual override option

Blank - No manual override
M - Manual override

For valve dimensions with manual override option installed see page A-980.

6 Valve housing material

Blank - Cartridge only
S - Steel

7 Port size

| Code | Port size | Housing number |
|------|----------------|----------------|
| 0 | Cartridge only | |
| 2G | 1/4" BSPP | 02-160743 |
| 3G | 3/8" BSPP | 02-160744 |
| 4T | SAE 4 | 02-160745 |
| 6T | SAE 6 | 02-160746 |

See section J for housing details.

8 Voltage rating

| | |
|--------------|----------------------|
| 00 - No coil | 24A - 24VAC |
| 12D - 12VDC | 115A - 115VAC |
| 24D - 24VDC | 230A - 230VAC |
| 36D - 36VDC | 12B - 12VDC/w diode* |
| | 24B - 24VDC/w diode* |

*Optional arc suppression diode.

9 Connector types

Blank - No coil
G - ISO 4400 DIN 43650
Q - Spade terminals
W - Flying lead
N - Deutsch (DC only)
Y - Amp JR (DC only)
D - Metripack 150 male (DC only)
J - Metripack 280 male (DC only)

10 Coil series

P - 8 series, 23 W

For coil part numbers and dimensions see section C.

11 Special features

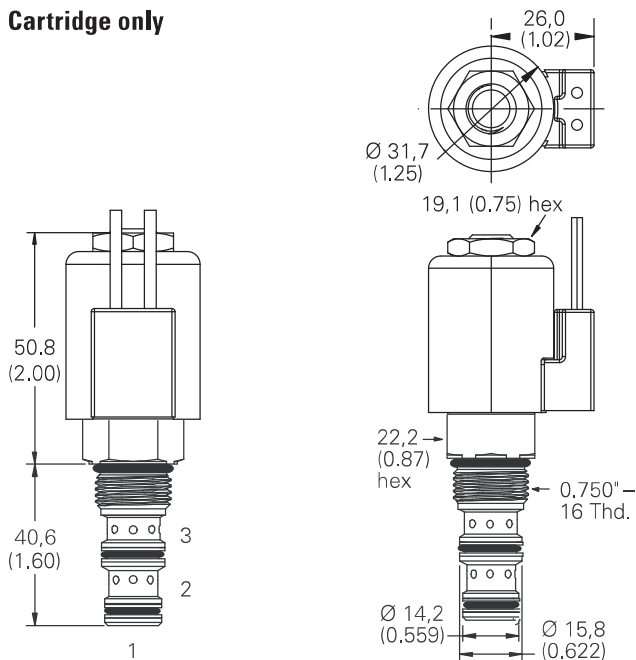
00 - None

(Only required if valve has special features, omitted if "00".)

Dimensions

mm (inch)

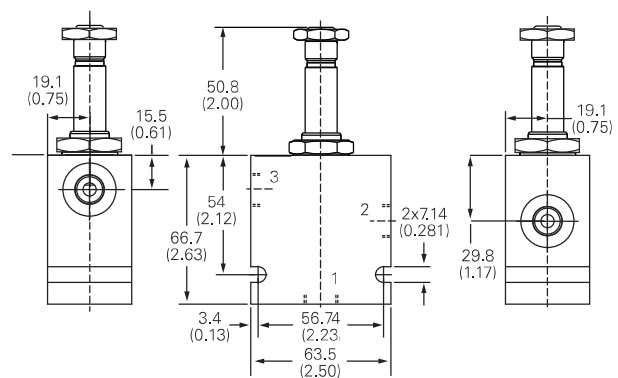
Cartridge only



Torque cartridge in steel or aluminum housing 34-41 Nm (25-30 ft lbs)

Note: When solenoid valve is ordered as cartridge only, nut is included.

Installation drawing



Warning

Maintain 5-8 Nm (4-6 ft lbs) maximum torque on valve tube nut.

Over tightening may cause valve failure.

Where measurements are critical request certified drawings. We reserve the right to change specifications without notice.